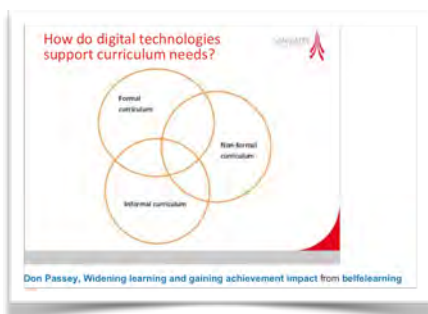


36,000 children in Birmingham schools have had their own computer because of the Birmingham eLearning Foundation (BeLF). For over ten years as a charity, BeLF has combined the generosity of parents, the commitment of schools and the contribution of sponsors so that ALL students in a cohort get a personal learning device as part of an inclusive, sustainable, project.

There are a number of advantages to our approach. And in times of decreasing budgets we have managed to continue our success by combining the new and incremental funding from parents with statutory funding and the financial assistance of sponsors and partners. Because of our charitable status, the value of the money is maximised by VAT recovery and gift aid.



The educational improvements have been demonstrated through research by the University of Birmingham and by Professor Don Passey at the University of Lancaster. Each school we work with might have a different educational focus, like; literacy, numeracy, parental engagement, or GCSE results, but there is a common thread of motivation, aspiration and achievement across all of our projects.

Young people + technology = motivation

Young people + technology + parents = higher aspiration

Young people + technology + parents+ schools = higher achievement

Young people + technology + parents+ schools + BeLF = inclusive and proven

Young people + technology + parents+ schools +BeLF + sponsors = sustainability

How Can **You** Help? *The value is proven, the process works; we need help so this scheme helps more children, in more schools, in more parts of Birmingham and surrounds.*

- Tech Companies: Are you able to supply a package of devices, content and support to pupils and schools?
- Schools: Are you ready to embrace technology to deliver improved achievement using subsidised equipment for your pupils?
- Project Sponsors: Can you enable us to develop a franchise model to spread this approach? Can you sponsor a class or a school to help them maximise the impact
- Education Services: Will you help BeLF spread and promote its approach to the benefit of learners?
- Pupils and Parents: Do you want your school to do this? If so, talk to your Head, governors or BeLF.



# What we do in schools.

**BeLF**  
Birmingham eLearning Foundation  
The Exchange,  
149-153 Alcester Road,  
Moseley,  
B13 8JP  
**Contact us:**  
CEO: [ian@belf.org.uk](mailto:ian@belf.org.uk), 07932 374 113  
Enquiries: [enquiries@belf.org.uk](mailto:enquiries@belf.org.uk)  
Telephone: 07882 175 855  
[belfcharity](#) [@belfeLearning](#)  
Registered Charity Number: 1089636

- BeLF provides schools with a proven scheme that combines parental contributions, school resources and device providers' expertise
- School purchases devices VAT free and creates the technical and learning environment
- All children get 'latest' device, connectivity and educational content in an inclusive programme
- BeLF processes voluntary parental contributions, collects gift aid and grants funds to pay back the investment
- Parents get involved with school and with digital, get access to device, support, and their children's learning
- Schools get digitally enabled pupils, subsidised equipment and support, and higher achievement

Most importantly, we have established a community of stakeholders willing to share their expertise and experience, including; vendors with access to the latest ideas and technology; schools who have achieved real success that they are able to demonstrate; researchers who have documented and measured the gains; and thousands of students using IT productively and creatively on a daily basis - driving up the standards of education in our schools.



If your school is interested in working with us to give your pupils the personal devices they need to enhance their educational attainment, please contact us via [ian@belf.org.uk](mailto:ian@belf.org.uk) or through our website at: [www.belf.org.uk](http://www.belf.org.uk)

Since 2001, the Birmingham e-Learning Foundation has worked tirelessly with Birmingham's schools to enhance pupils' educational attainment. Its focus has been to help provide computers, netbooks and now the very latest iPads as well as home broadband connectivity. To date over 36,000 pupils in over 50 schools in Birmingham have been supported through various programmes. BeLF is dedicated to working with schools, parents and other partners in providing personal learning devices for ALL pupils in Birmingham. Having their own personal learning device to support their classwork motivates and raises pupils' aspirations no matter what their circumstances.